

**"ALL KIDS NEED IS
A LITTLE HELP,
A LITTLE HOPE,
AND SOMEBODY WHO
BELIEVES IN THEM"**

Magic Johnson



Contact Us

600 Toke St.
Timmins, ON, P4N 6W1
Phone: (705) 267-8181
Fax: (705) 264-4255
email: general@ctrc.on.ca
www.ctrc.on.ca

Cochrane Temiskaming Infant and Child Development Program

A Program of the Cochrane Temiskaming
Resource Centre



Who We Are

We are a home-based, family-centered program that specializes in early intervention and assessment to support children in reaching optimal development

We are members of the Ontario Association of Infant and Child Development Programs. Our program is voluntary and funded by the Ministry of Children, Community and Social Services

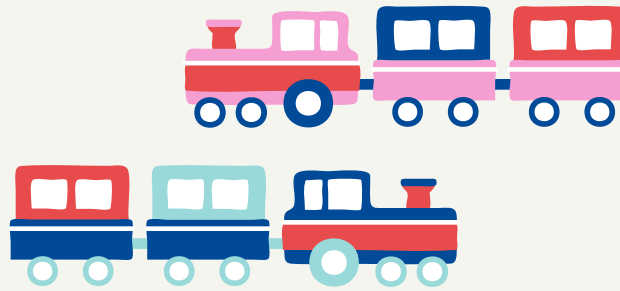
Who We Serve

We serve families of young children from birth to school entry residing in the Cochrane-Temiskaming District

- who have, or who may be at risk for, developmental delays or disability
- that are seeking information on child development

RISK CATEGORIES

- **Established risks:** those who have diagnosed medical conditions
- **Biological risks:** those who have a history of early developmental events (such as prenatal, perinatal, or neonatal complications) that may result in developmental difficulties
- **Psychosocial risks:** those with adverse environmental circumstances



REFERRALS

Referrals may be made by parents as well as physicians and community service providers with parental consent

TO MAKE A REFERRAL

For assistance or for more information, please call:

(705) 267-8181 in **Timmins**

(705) 272-2917 in **Cochrane & James Bay Region**

(705) 335-8300 in **Kapuskasing**

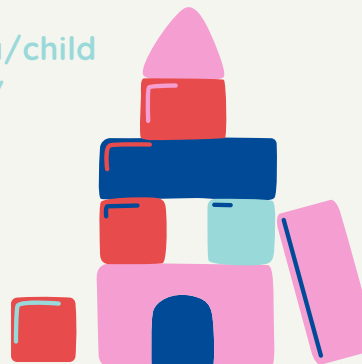
(705) 567-3598 in **Kirkland Lake**

(705) 647-7607 in **New Liskeard**

REFERRAL FORMS

can be found on our website at

www.ctrc.on.ca/child-development/



What We Do

- Developmental Consultants visit families primarily in their homes; the frequency of visits are mutually agreed upon
- Consultation, case management, and advocacy
- Developmental screenings and assessments
- Sharing of information related to typical and atypical child development
- Support to enhance parental/caregiver competence



- Parental/caregiver coaching that promotes positive family interactions and environments that foster growth and development
- Routines-based intervention in all developmental domains: gross and fine motor, social and emotional, communication, and cognitive
- Provide information about additional community resources and supports and assist with referral processes, where appropriate
- Assist with accessing specialized funding, where appropriate
- Supported transition into school